



safire

CONTROL CENTER

Introduction



 **safire**
CONTROL CENTER
Client Software

License-free management software used
to monitor and set up security devices in
small and medium scale projects

ALL IN ONE
Security software



Analog Cameras+DVRs



IP cameras & NVR



 **P2P**
EasyConnect



IP

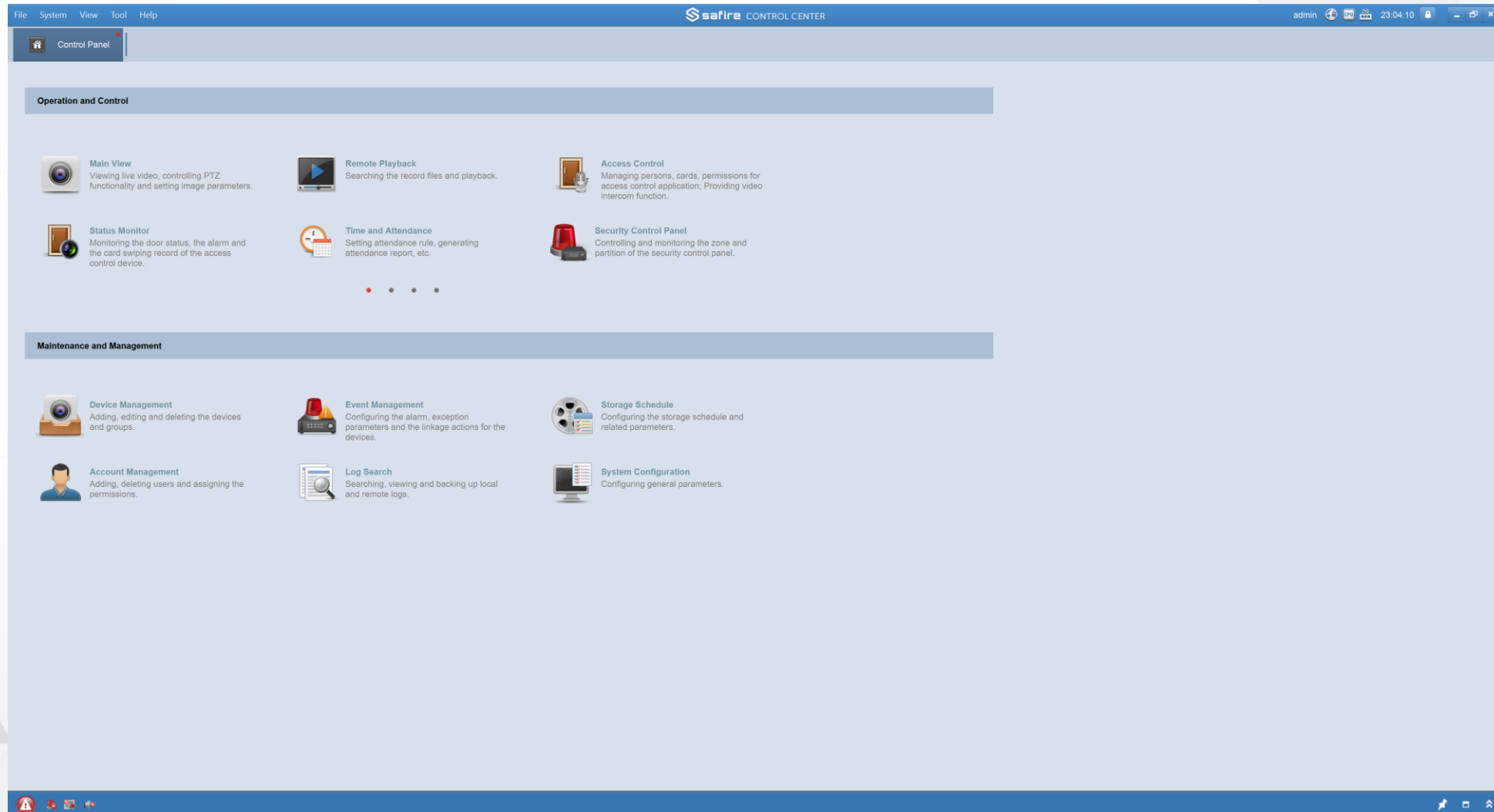


Video Intercom



Access Control & Time Attendance

Previous version



New version highlights



ADVANCED MODULES

Data retrieval | Report | AI Dashboard

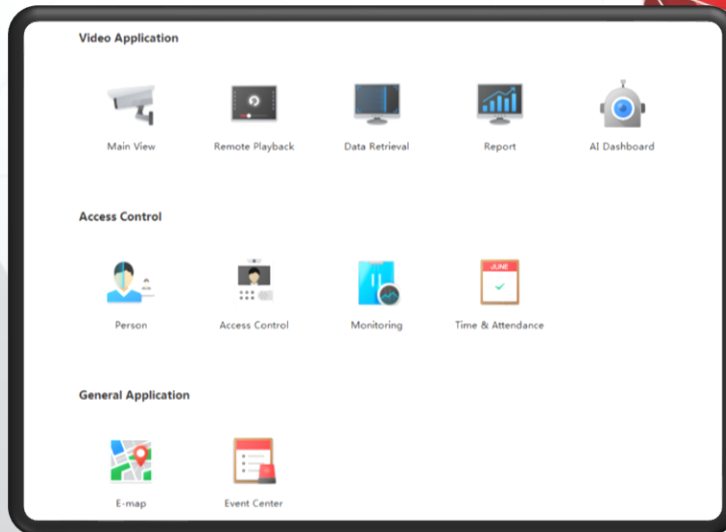
RESOURCE CONSUMPTION

Optimizing loading speed

Flexible | Choose modules to install

NEW DESIGN

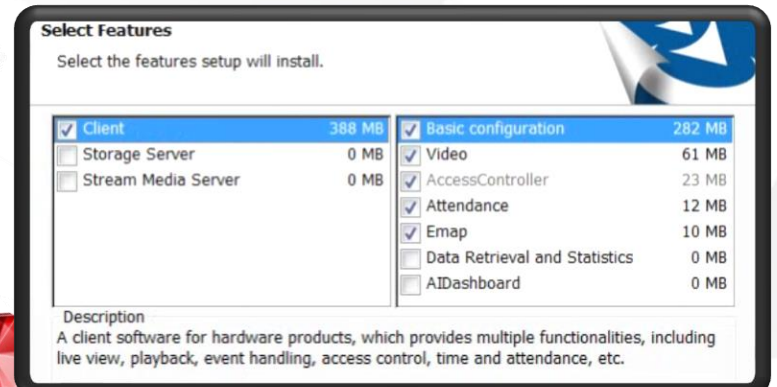
Intuitive and friendly interface



MULTILINGUAL PACKAGE

Up to 32 languages

2 SKINS
Dark
Bright



NEW ARCHITECTURE

24/7 Receiving data and events
even if the client is not in operation



CLIENT

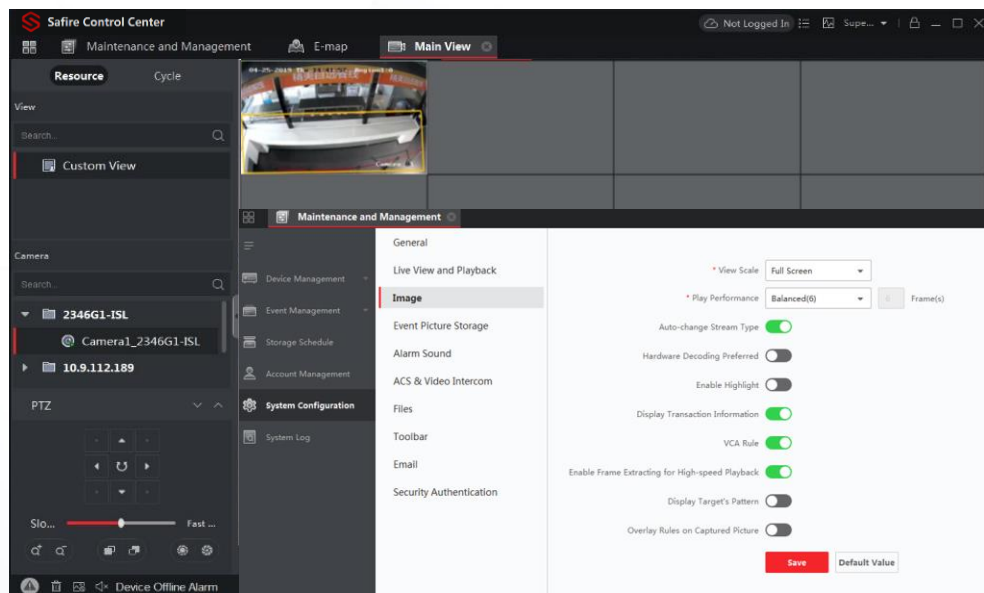


SERVER
in the background

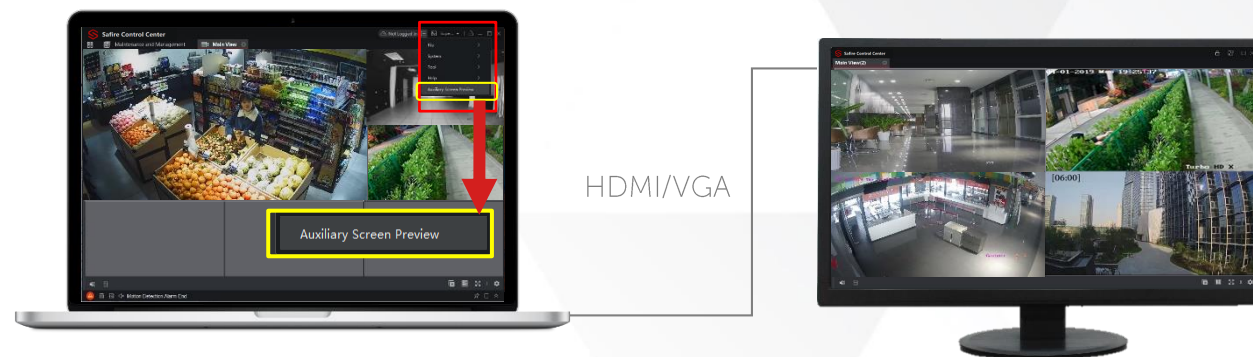


WATCHDOG
hidden icon

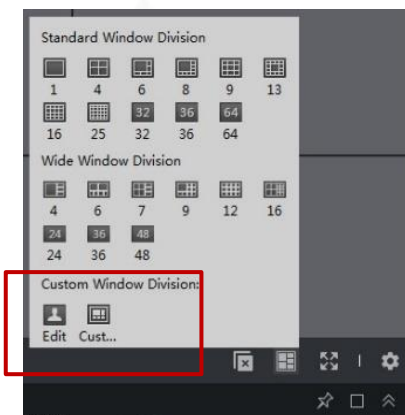
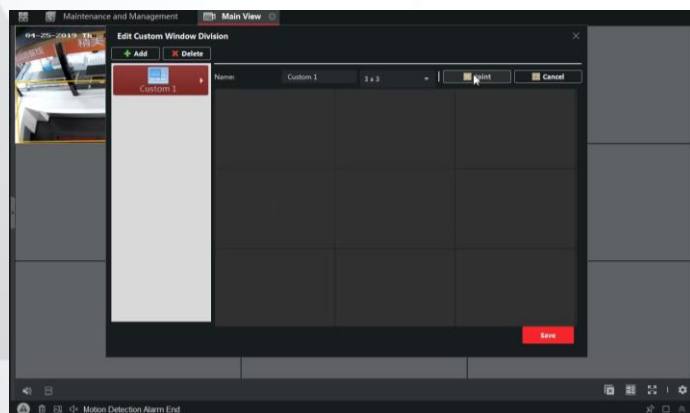
Modules: MAIN VIEW



AUXILIARY SCREEN PREVIEW



Supports up to **4 preview screens** (1 main view window and 3 auxiliary windows) and up to 256 channels of live view at the same time theoretically (depending on the performance of the computer)



OPTIMIZED DECODING STRATEGY

Auto-switch between main stream and sub-stream with the change of window division and balancing between high quality image and fluency as the decoding ability of the PC is limited

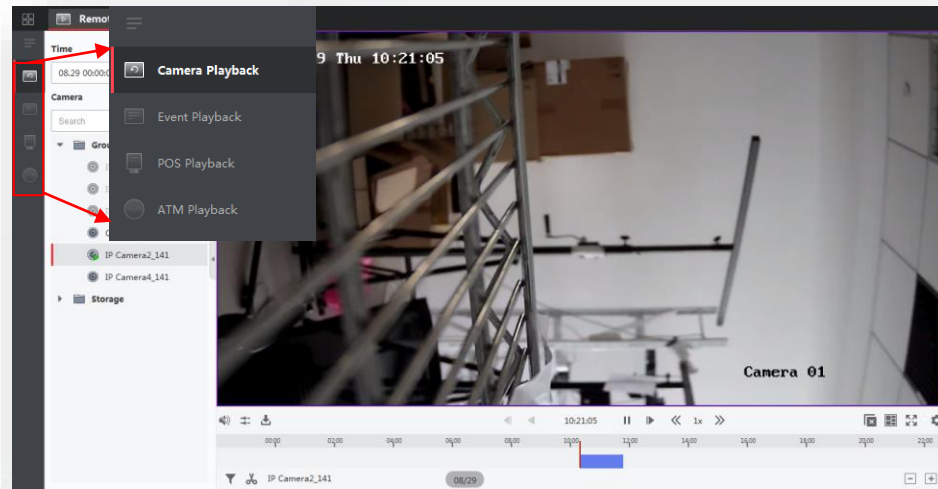
FLEXIBLE SELECTIONS OF WINDOW DIVISION

20 built-in division types for choice and 5 more for customization
Up to 64 (16:9) and 48 (4:3)

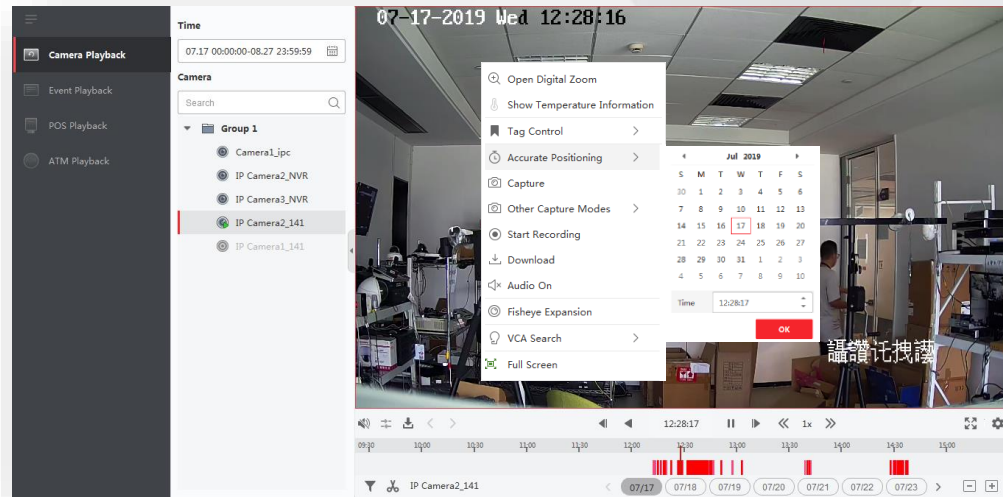
Modules: REMOTE PLAYBACK



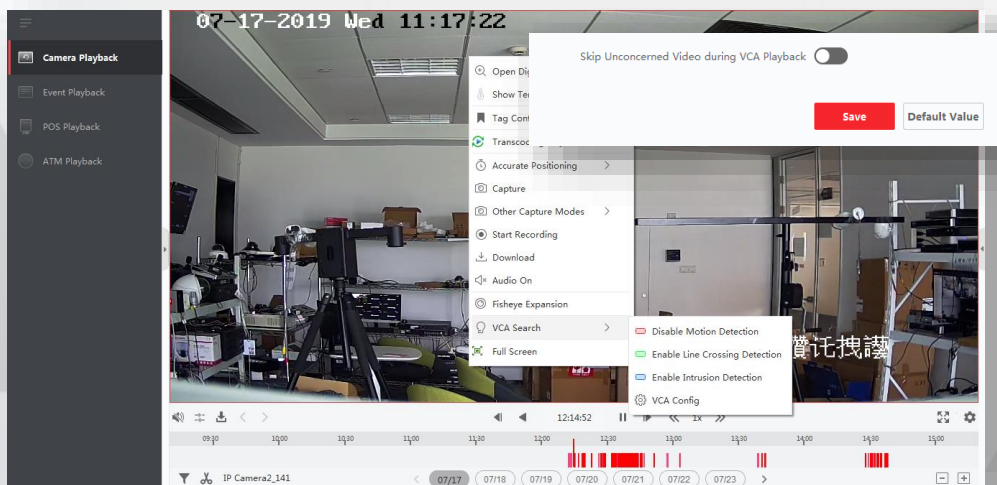
PLAYBACK OPTIONS



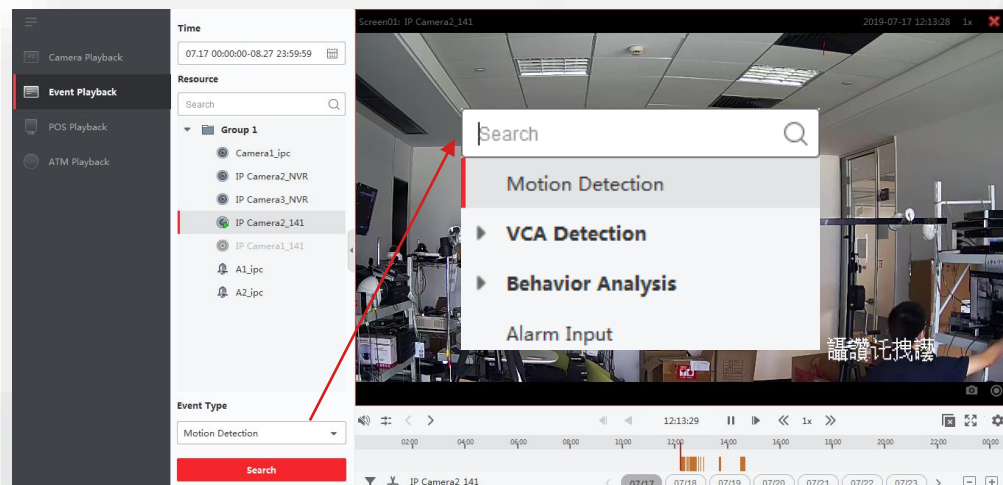
Camera playback



VCA Search



Event playback



ADVANCED MODULES



Data Retrieval

DATA RETRIEVAL: Humans & Vehicules target

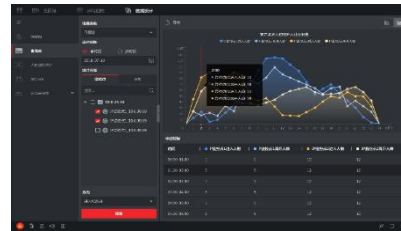
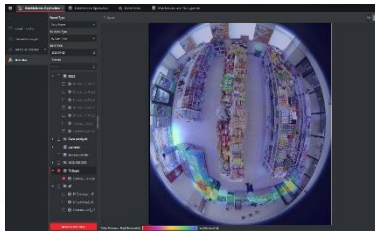
Face Picture Retrieval Vehicle Retrieval
Human Body Retrieval Hard Hat Search
Behavior Analysis Frequently Appeared person Retrieval



Report

REPORT for Data Statistics Application

People Counting, Intersection Analysis, Queue Management, Heat Map



AI Dashboard

AI DASHBOARD

Facial Recognition and Linked capture alarm



FACE
RECOGNITION



HUMAN
DETECTION

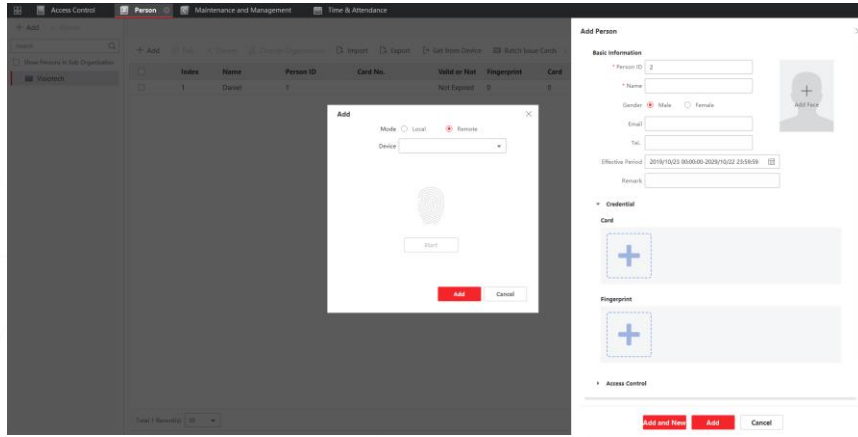


VEHICLE
DETECTION



HUMAN
BEHAVIOR

Attendance & Access Control Modules



Access Control System

Manage Templates & Access Groups

Users Management, Effective Periods, Biometric settings

Linkage Configuration

Advanced Functions: Anti-PassBack, Interlock, First person

Integration CCTV & Maps

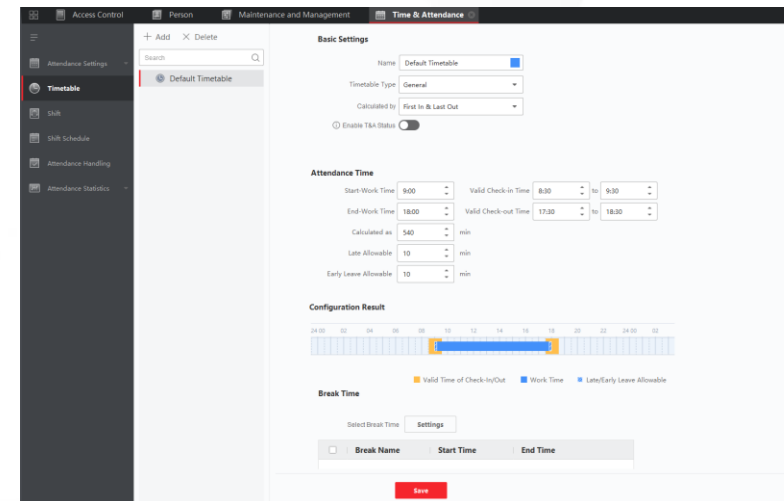
Time & Attendance: Settings & Reports

Set Timetables, Shifts & Schedules

Status & Overtime settings

Absents and Leave configuration

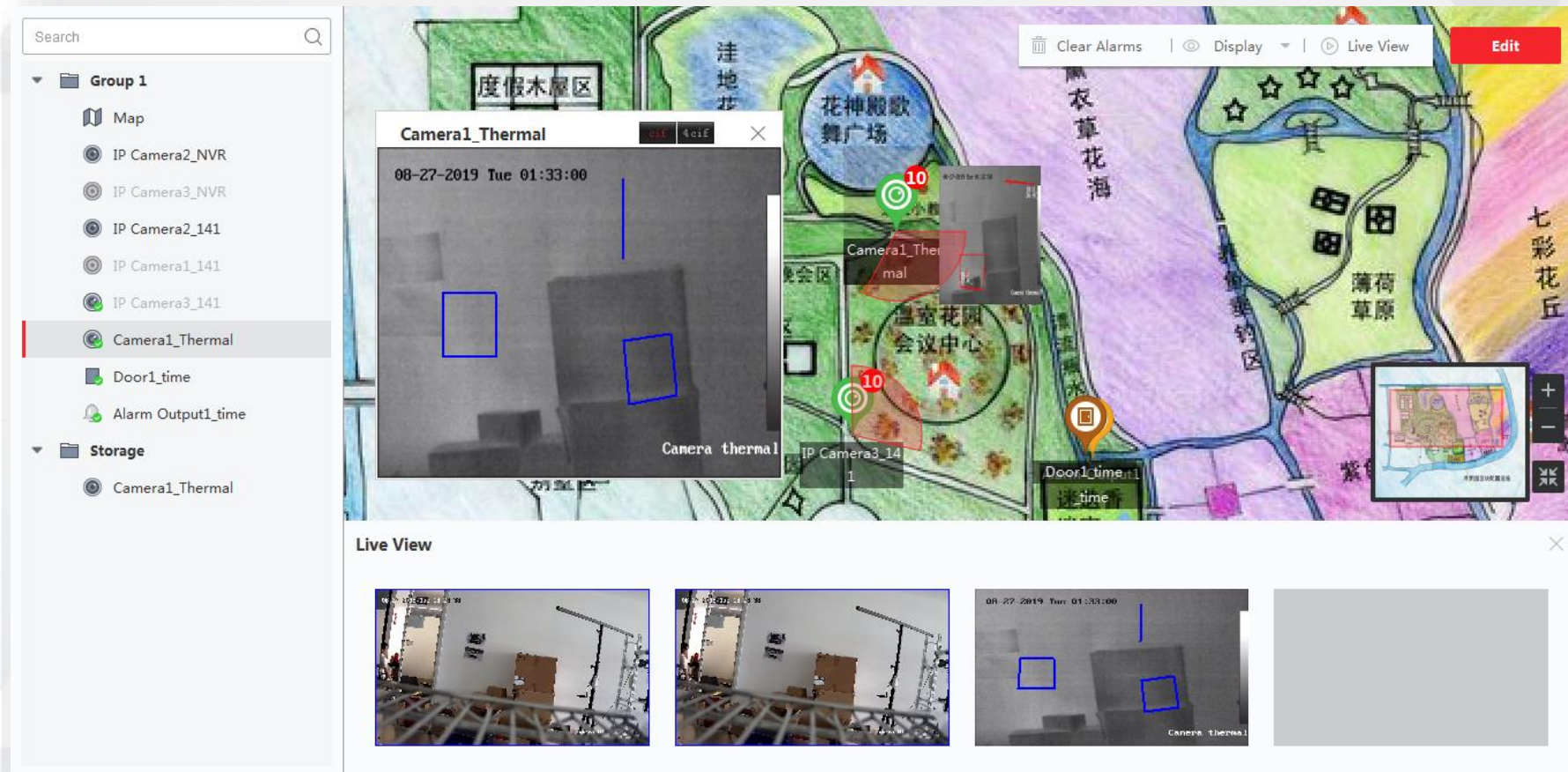
Statistics & Reports



Modules: E-MAP



All cameras and alarms can be deployed on the E-map based on the real deployment points. It will pop up on the point of the map when an alarm is triggered, making it easy to know where the intruders are for the security guards.



Modules: Event Center



Displaying real-time events with visual verification and searching for historical events, applying device type and priority filters

The screenshot displays the Safire Event Center interface. On the left is a dark sidebar with navigation options: 'Real-time Event' (selected), 'Event Search', and 'Security Control Panel'. The main area at the top contains filter controls for 'Device Type' (Encoding Device, Security Control Panel, Video Intercom, Access Control Device, Storage Device, Cloud P2P Device, Security Radar) and 'Priority' (High, Medium, Normal, Uncategorized). Below these are action buttons: 'Acknowledge in Batch', 'Clear', 'Enable Alarm Triggered Pop-up Image', 'Audio On', and 'Auto-Select Latest Event', along with a search bar labeled 'Filter'. A table lists recent events with columns for Index, Event Source, Event Type, Event Time, Priority, and Event Details. The table shows five entries, all categorized as 'Uncategorized' and related to temperature detection from an 'Encoding Device:ipc Camera...'. The bottom section, titled 'Event Details', shows two video thumbnails. The left thumbnail is dated '08-26-2019 Mon 07:15:10' and the right one '08-26-2019 Mon 06:38:44'. Both show thermal images with red bounding boxes indicating detected objects and their temperatures (25.6°C and 31.7°C respectively). To the right of the thumbnails are tabs for 'Event Details' and 'Handling records'. The 'Event Details' tab shows information for 'Linked Camera Camera1_ipc Preset1, Area No.:3, Alarm PriorityAlarm, Alarm Type:Max. Temperature, Current Temperature31.7°CIf check-in isTriggering'. The 'Handling records' tab shows a 'No handling record.' message with a trash icon.

Index	Event Source	Event Type	Event Time	Priority	Event Details
1874	Encoding Device:ipc Camera...	Temperature Detecti...	2019-08-26 19:20:02	Uncategorized	Linked Camera Camera1_ipc Preset1, Area No.:2, AL...
1873	Encoding Device:ipc Camera...	Temperature Detecti...	2019-08-26 19:19:58	Uncategorized	Linked Camera Camera1_ipc Preset1, Area No.:3, AL...
1872	Encoding Device:ipc Camera...	Temperature Detecti...	2019-08-26 19:19:58	Uncategorized	Linked Camera Camera1_ipc Preset1, Area No.:2, AL...
1871	Encoding Device:ipc Camera...	Temperature Detecti...	2019-08-26 19:19:55	Uncategorized	Linked Camera Camera1_ipc Preset1, Area No.:3, AL...
1870	Encoding Device:ipc Camera...	Temperature Detecti...	2019-08-26 19:19:55	Uncategorized	Linked Camera Camera1_ipc Preset1, Area No.:2, AL...

Event Linkage

Link the camera to capture picture when the access event is triggered.



The image displays two screenshots of the Safire software interface. The left screenshot shows the 'Maintenance and Management' section with the 'Access Control Event' tab selected. A 'Modify Linkage' dialog box is open, showing the configuration for the 'Fingerprint Not Exist' event type. The 'Trigger Client Action' section has 'All' selected, and 'Audible Warning' and 'Display on Map' are checked. The 'Linked Camera' is set to 'Camera1_Thermal'. The right screenshot shows the 'Real-time Event' section with a table of events. The 'Fingerprint Not Exist' event type is highlighted in red in the table. Below the table, the 'Event Details' section shows two video frames from 'Camera1_Thermal' with blue bounding boxes indicating detected objects.

Maintenance and Management

Search

time

Door1

Entrance... Reader1

Access Control Event

Event Type

- ☐ Face, password, and fingerprint timeout.
- ☒ Fingerprint Not Exist
- ☐ Fingerprint Recognition Failed
- ☐ Fingerprint Recognition Passed
- ☐ Fingerprint and Password Failed
- ☐ Fingerprint and Password Passed
- ☐ Fingerprint and Password Timed Out
- ☐ Human Detection Failed
- ☐ Identification Matched
- ☐ Identification Matching Failed
- ☐ Interlocking Door Not Closed
- ☐ Invalid Anti-Passing Back Authentication
- ☐ Invalid Duration
- ☐ Max. Card No. Authentication Failed Atte...
- ☐ Max. Card and Password Authentication ...
- ☐ No Card No. Found
- ☐ No Permission for Normal Card

Uncategorized Audible Warning/Display on Map None

Uncategorized Audible Warning/Display on Map None

Uncategorized Audible Warning/Display on Map None

Modify Linkage

Event Type: Fingerprint Not Exist

Trigger Client Action

- ☒ All
- ☒ Audible Warning
- Access Control Alarm Sound
- ☐ Send Email
- ☐ Pop-up Window
- ☒ Display on Map

Linked Camera: Camera1_Thermal

OK Cancel

Real-time Event

Device Type: ☐ Encoding Device ☒ Security Control Panel ☒ Video Intercom ☒ Access Control Device ☒ Storage Device

Priority: ☒ High ☒ Medium ☒ Normal ☒ Uncategorized

Acknowledge in Batch Clear Disable Alarm Triggered Pop-out Image Audio On Auto-Select La

Index	Event Source	Event Type	Event Time	Priority	Event
742	Access Control Devicetime E...	Fingerprint Not Exist	2019-08-27 13:16:28	Uncategorized	Link
717	Access Control Devicetime E...	Fingerprint Not Exist	2019-08-27 13:15:51	Uncategorized	Link
706	Access Control Devicetime E...	Fingerprint Not Exist	2019-08-27 13:15:34	Uncategorized	Link
485	Access Control Devicetime E...	Fingerprint Not Exist	2019-08-27 13:09:44	Uncategorized	Link
364	Access Control Devicetime E...	Fingerprint Not Exist	2019-08-27 13:06:32	Uncategorized	Link

Event Details

Video ☒ Auto-Play Video Picture

08-27-2019 Tue 01:59:18

08-27-2019 Tue 01:16:19

Camera thermal

Camera thermal

Event Details

Linked Camera: Camera1_Thermal



safire

Thanks!